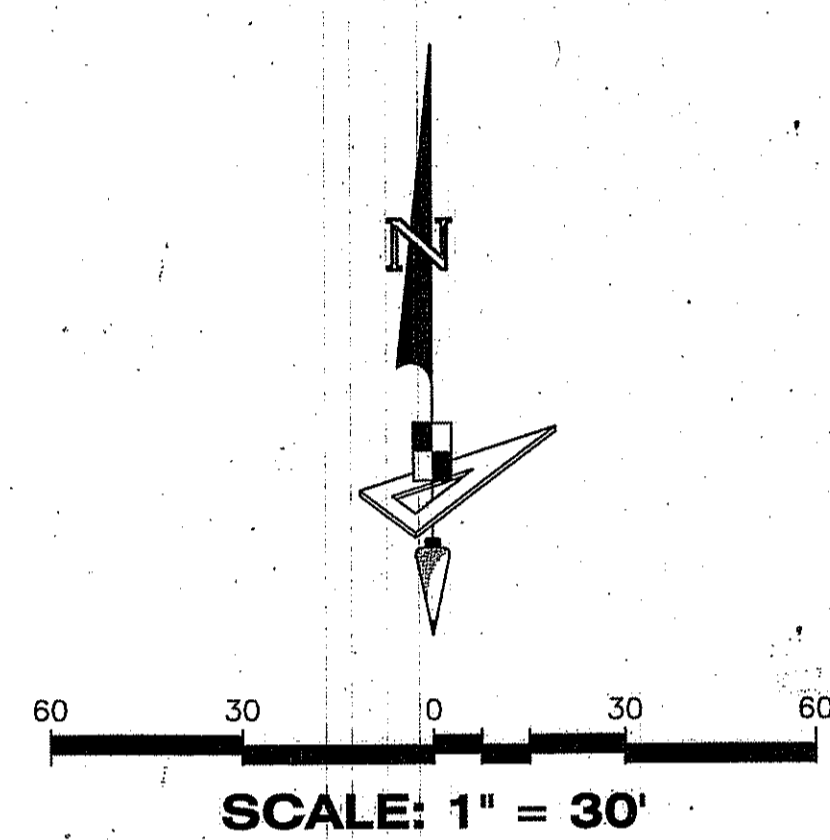
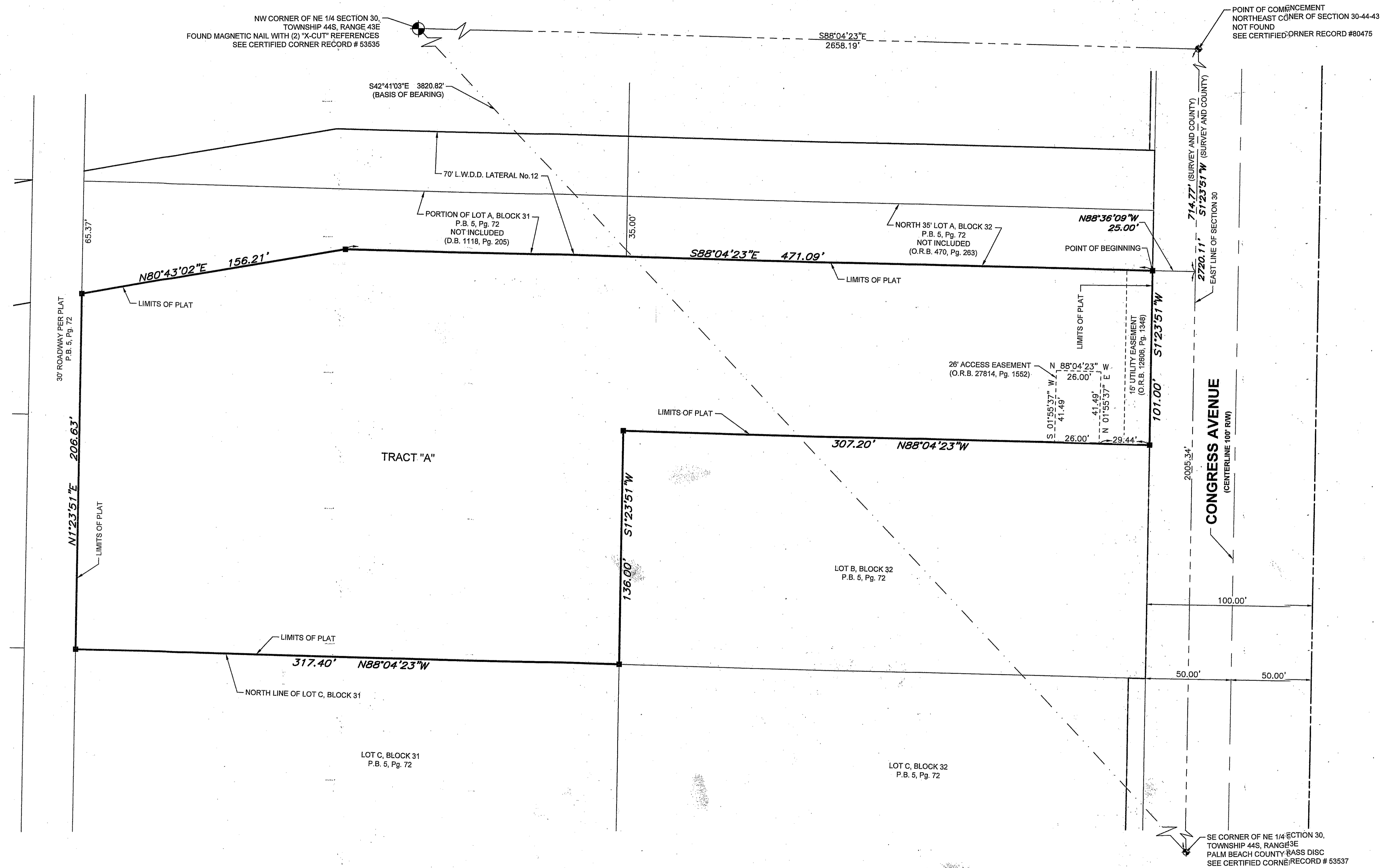


# KINGSWOOD ACADEMY OF PALM SPRINGS

BEING A REPLAT OF  
 A PORTION OF LOTS A AND B, BLOCK 31, PALM BEACH FARMS CO., PLAT NO. 7,  
 RECORDED IN PLAT BOOK 5, PAGE 72, PUBLIC RECORDS OF PALM BEACH COUNTY, FLORIDA  
 LYING IN SECTION 30, TOWNSHIP 44 SOUTH, RANGE 43 EAST  
 PALM BEACH COUNTY, FLORIDA  
 VILLAGE OF PALM SPRINGS  
 SHEET 2 OF 2

126  
 STATE OF FLORIDA }  
 COUNTY OF PALM BEACH } S.S.  
 THIS INSTRUMENT WAS FILED FOR  
 RECORD AT \_\_\_\_\_ M.  
 THIS \_\_\_\_\_ DAY OF \_\_\_\_\_  
 2016 AND DULY RECORDED IN  
 PLAT BOOK NO. \_\_\_\_\_  
 ON PAGE \_\_\_\_\_  
 SHARON R. BOCK,  
 CLERK AND COMPTROLLER  
 BY: \_\_\_\_\_ D.C.



BEARINGS SHOWN HEREON ARE BASED ON THE LINE BETWEEN THE NORTHWEST CORNER OF THE NORTHEAST QUARTER OF SECTION 30, TOWNSHIP 44 SOUTH, RANGE 43 EAST AND THE SOUTHEAST CORNER OF SAID NORTHEAST QUARTER, HAVING A GRID BEARING OF S.42°41'03"E. BEARINGS SHOWN HEREON, REFER TO THE STATE PLANE COORDINATE SYSTEM, NORTH AMERICAN DATUM OF 1983 (NAD 83 / 07) FOR THE EAST ZONE OF FLORIDA. SAID BASIS OF BEARING IS THE SAME IN THE NORTH AMERICAN DATUM OF 1983 (NAD 83 / 90).

COORDINATES SHOWN HEREON ARE FLORIDA STATE PLANE GRID  
 DATUM = NAD83 1990 ADJUSTMENT  
 ZONE = FLORIDA EAST  
 LINEAR UNITS = US SURVEY FEET  
 COORDINATE SYSTEM = 1983 STATE PLANE  
 PROJECTION = TRANSVERSE MERCATOR

### LEGEND

- O.R.B. ----- Official Records Book
- P.B. ----- Plat Book
- D.B. ----- Deed Book
- Pg(s). ----- Page(s)
- L.W.D.D. ----- Lake Worth Drainage District
- ----- Permanent Reference Monument
- ⊕ ----- Section Corner

**GeoPoint**  
 Surveying, Inc.

4152 W. Blue Heron Blvd. Phone: (561) 444-2720  
 Suite 105 www.geopointsurvey.com  
 Riviera Beach, FL 33404 Licensed Business Number LB 7768